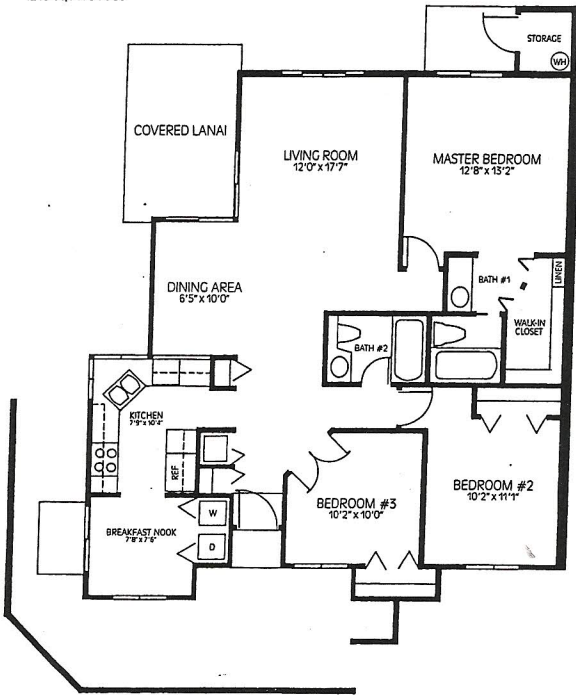


## The Drake.

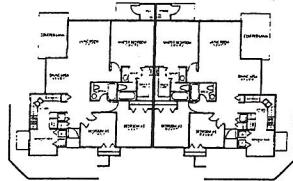
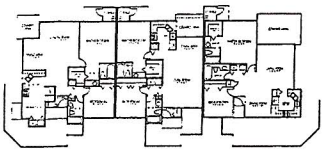
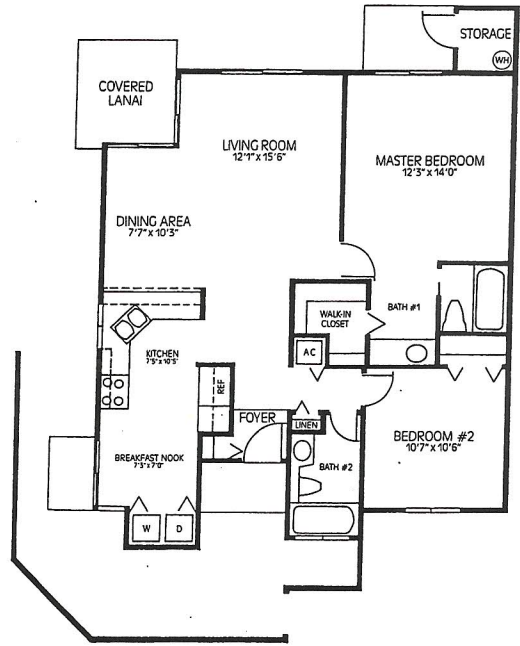
Three bedroom/two bath home.  
1215 square feet



All dimensions are approximate.

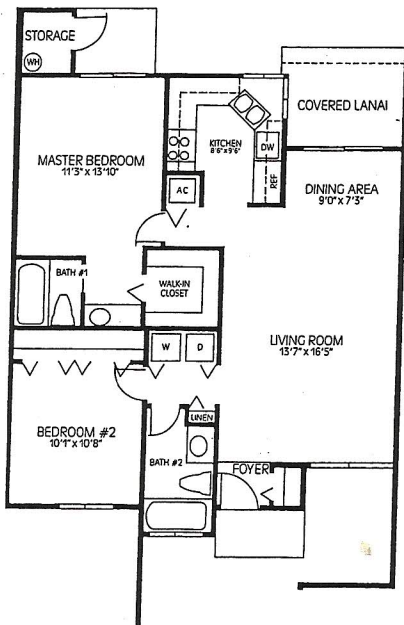
## The Crane.

Two bedroom/two bath home.  
1008 square feet  
Breakfast room, separate dining area.



## The Blue Heron.

Two bedroom/two bath home.  
943 square feet.



## Features:

- Vaulted cathedral ceilings.
- Covered private patios.
- Ground floor convenience.
- Armstrong New Exton carpeting.
- Armstrong Castilian vinyl in kitchens, and baths.
- Fiberglass tub and shower enclosures.
- Sliding glass doors onto patios.
- Separate outside storage rooms.
- All frame construction.
- Central heat and air.
- Washer/Dryer hookups.
- Linen closets.
- Covered parking.
- Masonry party walls.
- Beautifully-landscaped grounds.
- Private roads.
- Ceramic tile in foyer.
- Energy efficient insulation using R-11 exterior walls and R-19 ceiling batt insulation.

## The Alary.

Two bedroom/two bath home  
909 square feet.  
Eat-in Kitchen

